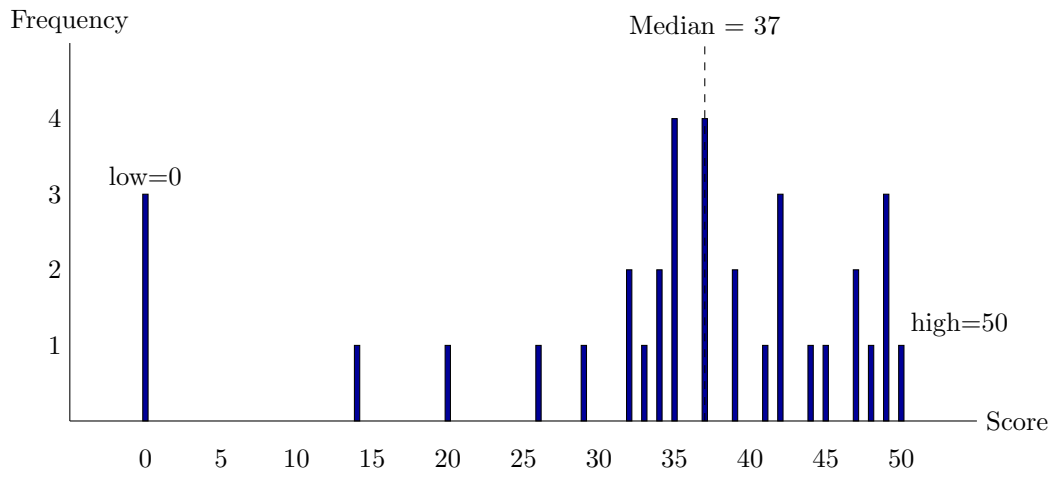
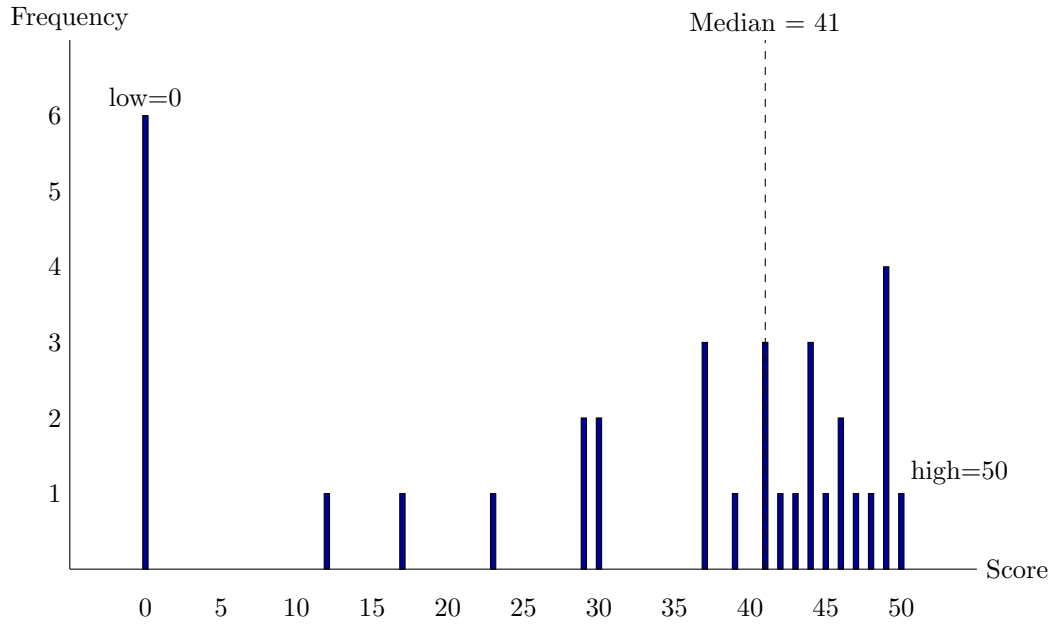


Homework 1 Grades



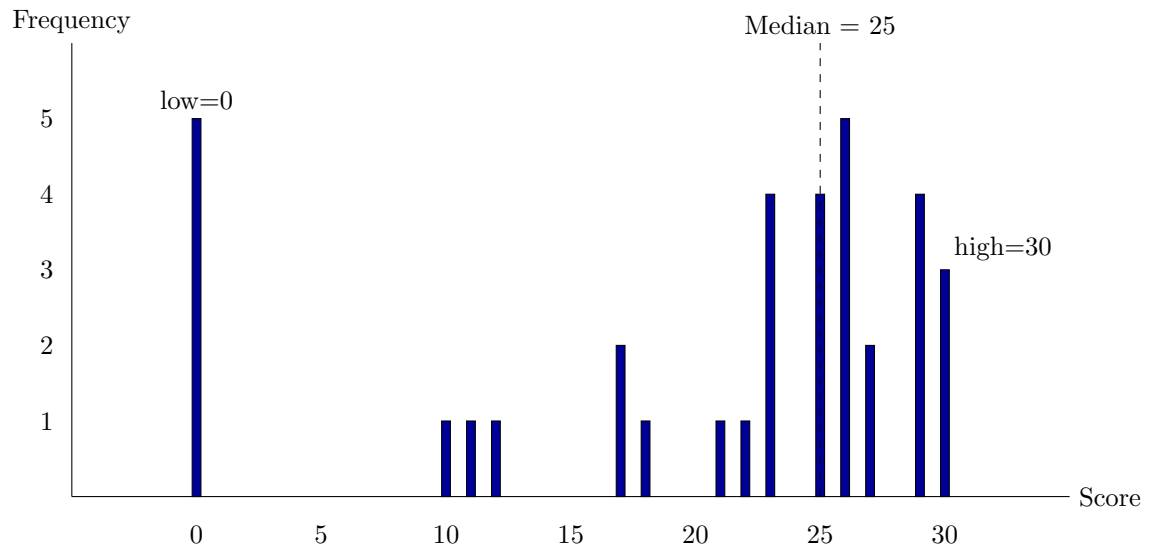
Mean: 34.71
Median: 37
Standard Deviation: 13.27

Homework 2 Grades



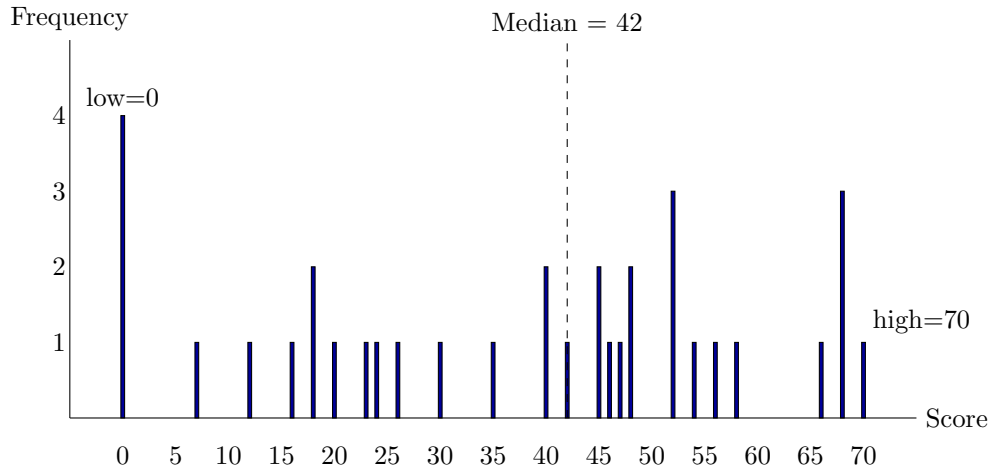
Mean: 32.51
Median: 41
Standard Deviation: 17.25

Homework 3 Grades



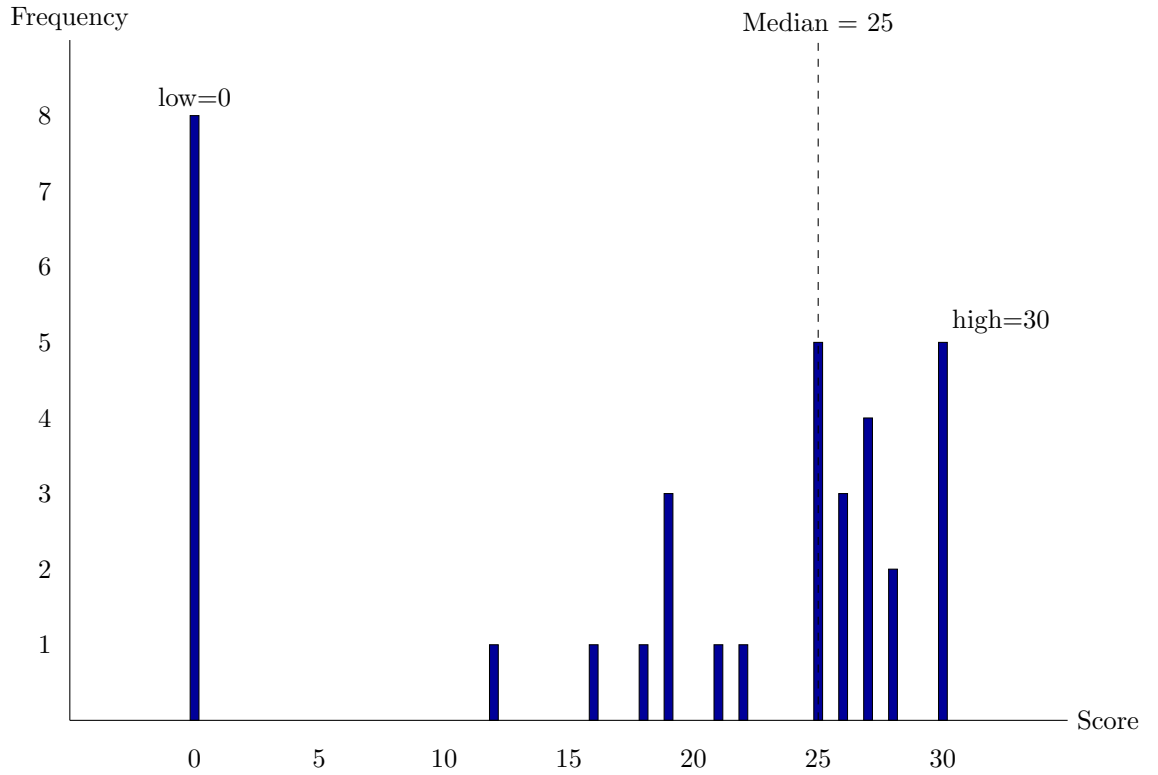
Mean: 20.29
Median: 25
Standard Deviation: 9.72

Project 1 Grades



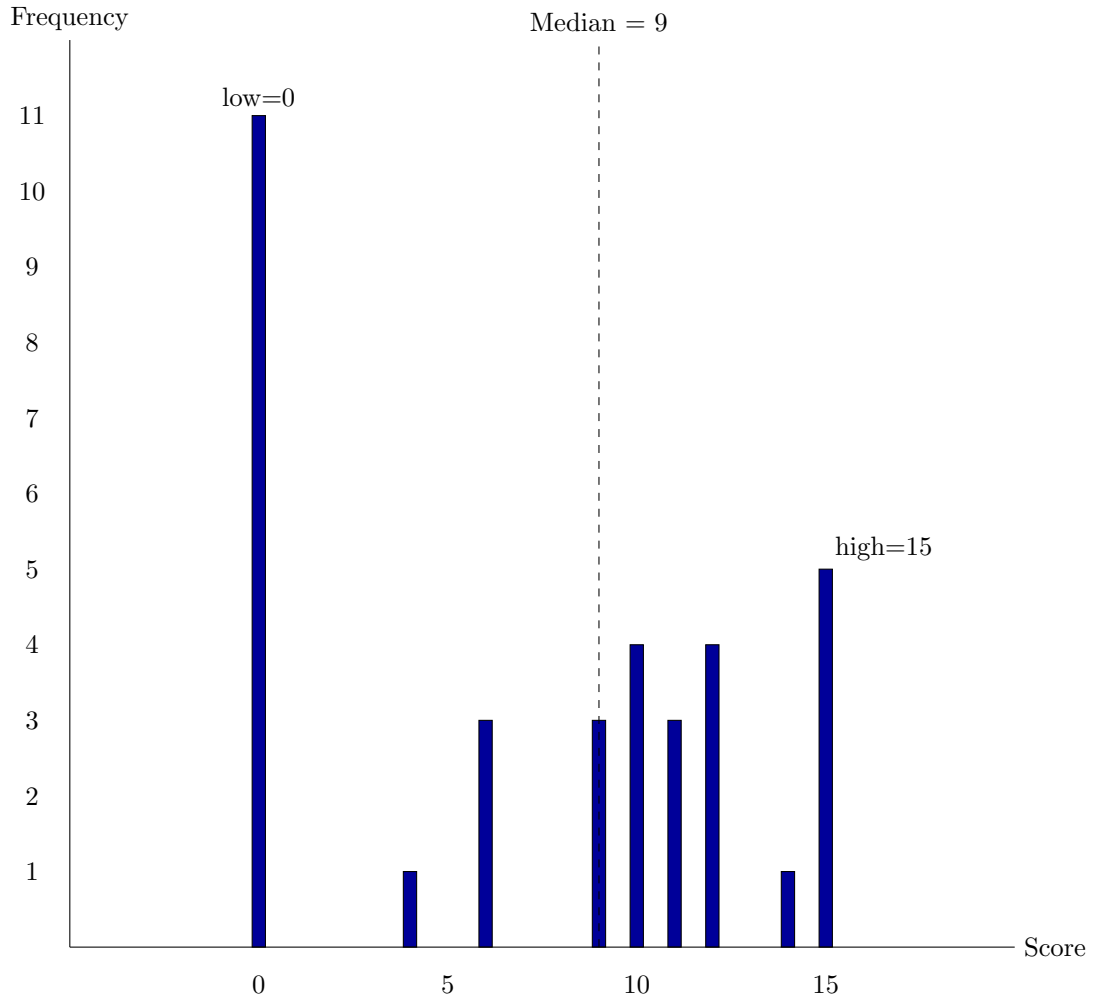
Mean: 36.97
Median: 42
Standard Deviation: 21.49

Project 2 Grades



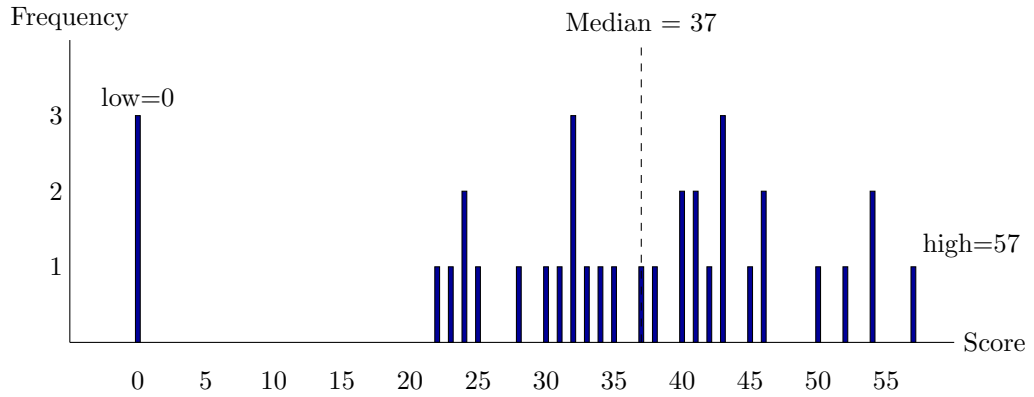
Mean: 18.94
Median: 25
Standard Deviation: 11.10

Project 3 Grades



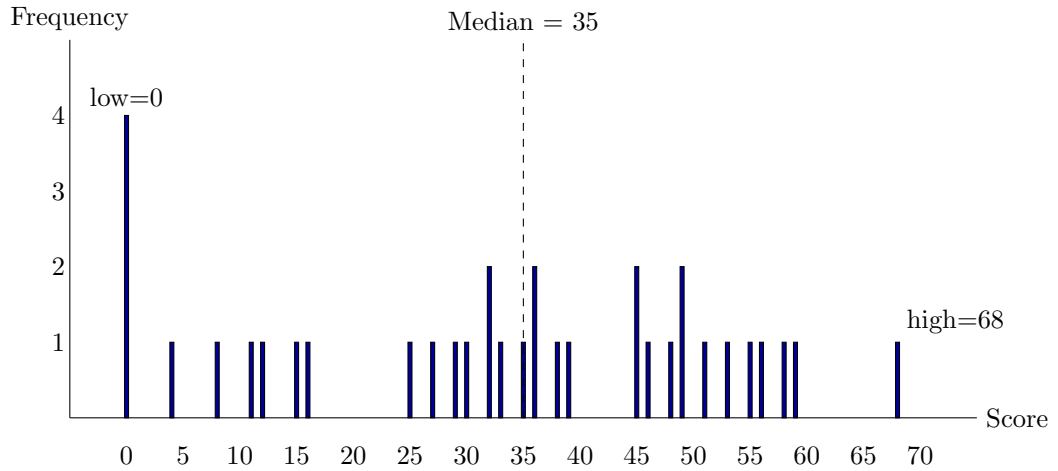
Mean: 7.40
Median: 9
Standard Deviation: 5.63

Midterm Exam Grades



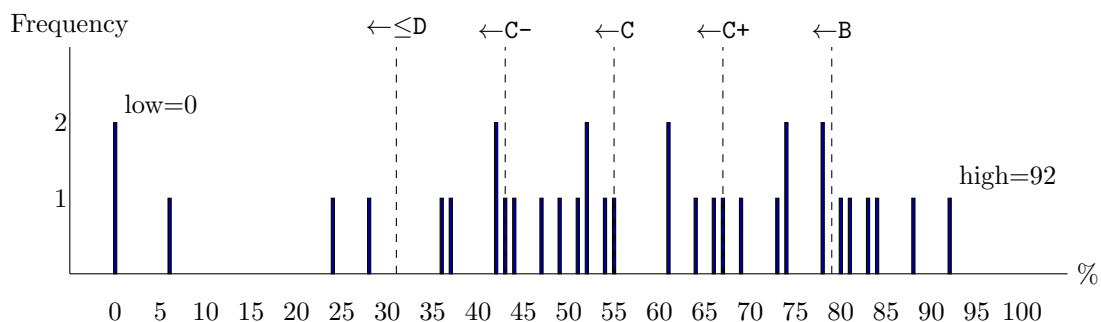
Mean: 34.77
Median: 37
Standard Deviation: 14.03

Final Exam Grades



Mean: 32.57
Median: 35
Standard Deviation: 19.29

Weighted Average Grades



Mean: 55.29

Median: 55

Standard Deviation: 23.70

The above curve was calculated based on the following grades.

Homework 1: worth 5% of the total (scored out of 50 points)

Homework 2: worth 5% of the total (scored out of 50 points)

Homework 3: worth 5% of the total (scored out of 30 points)

Project 1: worth 12% of the total (scored out of 70 points)

Project 2: worth 12% of the total (scored out of 30 points)

Project 3: worth 1% of the total¹ (scored out of 15 points)

Midterm: worth 25% of the total (scored out of 60 points)

Final: worth 35% of the total (scored out of 70 points)

To calculate your current placement on the above curve, look at the scores you got on the above assignments. On the front of your assignments, you should have a fraction: HW1/50 for Homework 1, HW3/30 for Homework 3, and so forth. Plug each of those into the following formula to get your weighted average percentage.

$$0.05 \times \frac{\text{HW1}}{50} + 0.05 \times \frac{\text{HW2}}{50} + 0.05 \times \frac{\text{HW3}}{30} + 0.12 \times \frac{\text{PRJ1}}{70} + 0.12 \times \frac{\text{PRJ2}}{30} + 0.01 \times \frac{\text{PRJ3}}{15} + 0.25 \times \frac{\text{Mid}}{60} + 0.35 \times \frac{\text{Final}}{70}$$

¹Though it was made “extra credit”, the majority of the class turned it in. Since it was such a simple project, most scored high on it. Thus, I reduced its weight to a level where it did its job: those who did the project got a decent bump in their weighted average percentage, and those who didn’t weren’t unduly punished.